

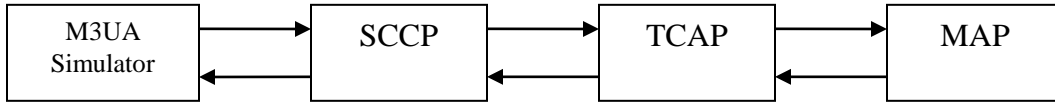
SIGTRAN Load Test Report

Test Environment

Operating System: RedHat Linux RHEL4_64_103 2.6.9

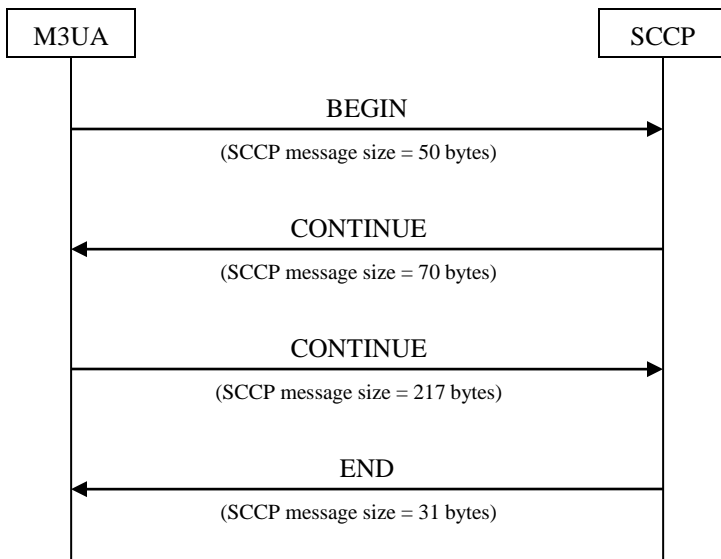
Processor: Intel Core2 Duo CPU E6750 @ 2.66GHz, 4096KB cache

Software Configuration



All software processes were run in the same computer server.

SS7 Message Scenario



BEGIN messages were sent in a bunch every 200ms. For example, to achieve a load of 5,000 messages per second, BEGIN messages were sent at a rate of 1,000 messages every 200ms.

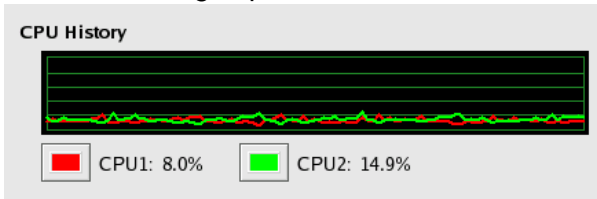
Test Results

Zero failures.

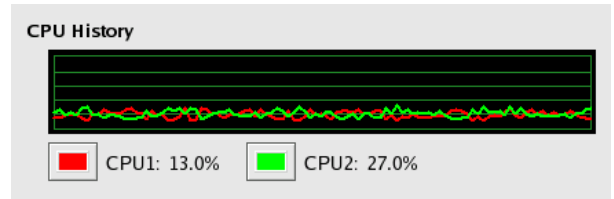
SIGTRAN Load Test Report

CPU Usage

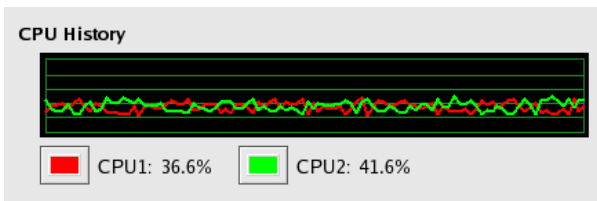
500 x 4 messages per second



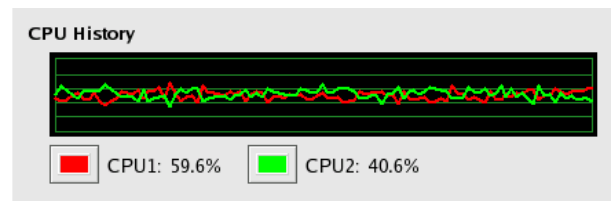
1,000 x 4 messages per second



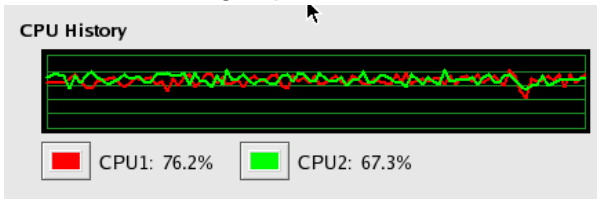
2,000 x 4 messages per second



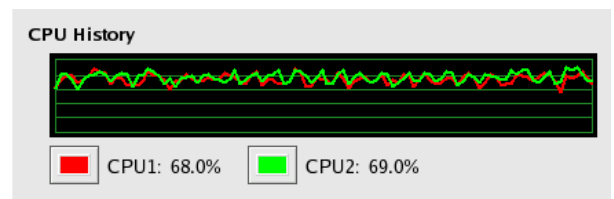
3,000 x 4 messages per second



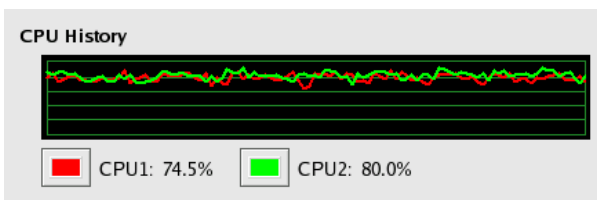
4,000 x 4 messages per second



5,000 x 4 messages per second



6,000 x 4 messages per second



For More Information

You are welcomed to contact us for more information about our SIGTRAN load test results. Please send emails to info@teamup.com.hk or give a ring to +852 2581 1672.

